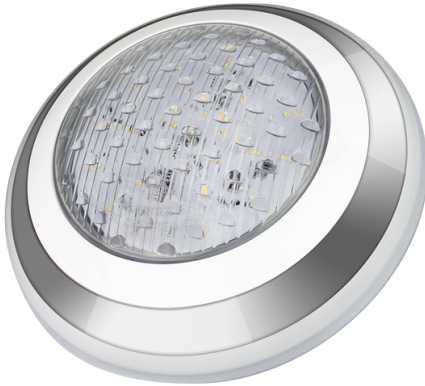


LED 27W RGB+CCT 12V IP68 UNDERWATER LAMP UW02

LED underwater lamp 27W RGB+CCT 12V IP68 UW02
AC12/12-24DC



Compatible products



Specification

| Parameter | Value |
|----------------------------|---------------------------|
| Symbol | UW02 |
| ETIM CLASS | Downlight/spot/floodlight |
| Nominal voltage [V] | 12 |
| Voltage type | AC/DC |
| Dimmable | yes |
| Luminous flux [lm] | 2000 |
| Colour temperature [K] | 2700-6500 |
| Power [W] | 27 |
| Power for white light [W] | 27 |
| Beam angle | Extreme wide beam > 80° |
| Colour rendering index CRI | CRI80 |
| Colour of light | RGB+CCT |
| With movement sensor | yes |
| With light sensor | yes |
| Lamp type | LED not exchangeable |
| Lamp efficacy [lm/W] | 75 |
| Diameter [mm] | 300 |
| Height/depth [mm] | 70 |

Weight [kg]

1.56

Dimensions

