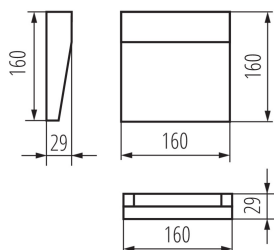
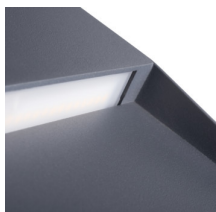


## 33752 DULI LED 6,5W-NW-L-GR

Surface-mounted light fitting

5905339337528



Kanlux DULI LED is a series of surface-mounted, façade luminaires. Modern and geometric design in a simple form makes this series very universal. A matte graphite finish and the most popular colour temperature for architectural luminaires (4000K) are other advantages. Kanlux DULI LED is decorative accent lighting that illuminates and decorates spaces around the building. Kanlux DULI LED surface-mounted luminaires are powered by 230V without using an additional power supply unit.

### GENERAL DATA:

**Colour:** anthracite  
**Place of assembly:** wall mounted  
**Place of application:** Indoors and outdoors  
**Minimum distance from the illuminated object:** 0,2m  
**Compatible with a dimmer:** no  
**RAL:** 7016  
**Width [mm]:** 160  
**Height [mm]:** 160  
**Depth [mm]:** 29  
**Integrated LED light source:** yes

### TECHNICAL DATA:

**Rated voltage [V]:** 220-240 AC  
**Rated frequency [Hz]:** 50  
**Maximum power [W]:** 6,5  
**Class of protection against electric shock:** I  
**Diode type:** LED SMD  
**Luminous flux [lm]:** 270  
**Useful luminous flux of the light source  $\Phi_{use}$  [lm]:** 740  
**Useful luminous flux of the light source  $\Phi_{use}$  [lm]:** in sphere (360°)  
**Colour temperature:** white  
**Correlated colour temperature [K]:** 4000  
**Colour consistency in McAdam ellipses:**  $\leq 6$   
**Colour rendering index:** 80  
**Service life [h]:** 30000  
**Number of on/off cycles:**  $\geq 25000$   
**Ambient temperature range to which the product can be exposed:** -15÷35  
**Enclosure material:** aluminum alloy  
**Protective glass material:** PC  
**Connection type:** Terminal block  
**Range of sections of wires used [mm<sup>2</sup>]:** 0,75-1,5  
**Lamp-heating time [s]:**  $\leq 1$

## 33752 DULI LED 6,5W-NW-L-GR

Surface-mounted light fitting



**Lamp-ignition time [s]:**  $\leq 0,5$

**IP class:** 54

### LOGISTIC DATA:

**Unit of measurement:** unit

**Packaging method:** 20

**Number of units in the secondary packaging:** 1

**Number of units in the packaging:** 20

**Net unit weight [g]:** 377

**Grammage [g]:** 458.5

**Length of a unit pack [cm]:** 17

**Width of a unit pack [cm]:** 4

**Height of a unit pack [cm]:** 17

**Weight of a cardboard box [kg]:** 9.17

**Width of a cardboard box [cm]:** 21.5

**Height of a cardboard box [cm]:** 36

**Length of a cardboard box [cm]:** 36

**Volume of a cardboard box [m<sup>3</sup>]:** 0.027864

KANLUX S.A. (kat 33752) DULI LED 6,5W-NW-L-GR / LDC (Polar)

Luminaire: KANLUX S.A. (kat 33752) DULI LED 6,5W-NW-L-GR  
Lamps: 1 x DULI LED 6,5W

